

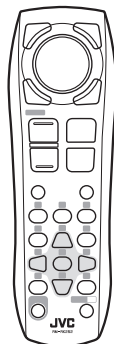
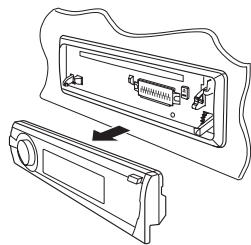
# JVC

## SCHEMATIC DIAGRAMS

### DVD/CD RECEIVER

**KD-ADV7490J, KD-DV7400J, KD-DV7405U  
KD-DV7405UN, KD-DV7405UT, KD-DV7405A  
KD-DV7406U, KD-DV7406UN, KD-DV7406UT  
KD-DV7406A, KD-DV7404UI, KD-DV7401E  
KD-DV7401EU, KD-DV7402E, KD-DV7402EU  
KD-DV7407EE, KD-DV7408EE**

CD-ROM No.SML200803



WMA MP3 WAV

DOLBY DIGITAL

DVD VIDEO

DIVX

DIVX ULTRA

COMPACT DISC DIGITAL VIDEO

dts Digital Out



SAT RADIO READY

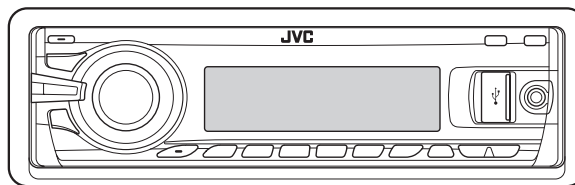
KD-ADV7490J  
KD-DV7400J



KD-DV7402/KD-DV7401E/EU

Radio Data System

KD-DV7408/KD-DV7407EE



Lead free solder used in the board (material : Sn-Ag-Cu, melting point : 219 Centigrade)  
Lead free solder used in the board (material : Sn-Cu, melting point : 230 Centigrade)

### Contents

Block diagram .....	2-1
Standard schematic diagrams .....	2-2
Printed circuit boards .....	2-9 to 10

## Safety precaution

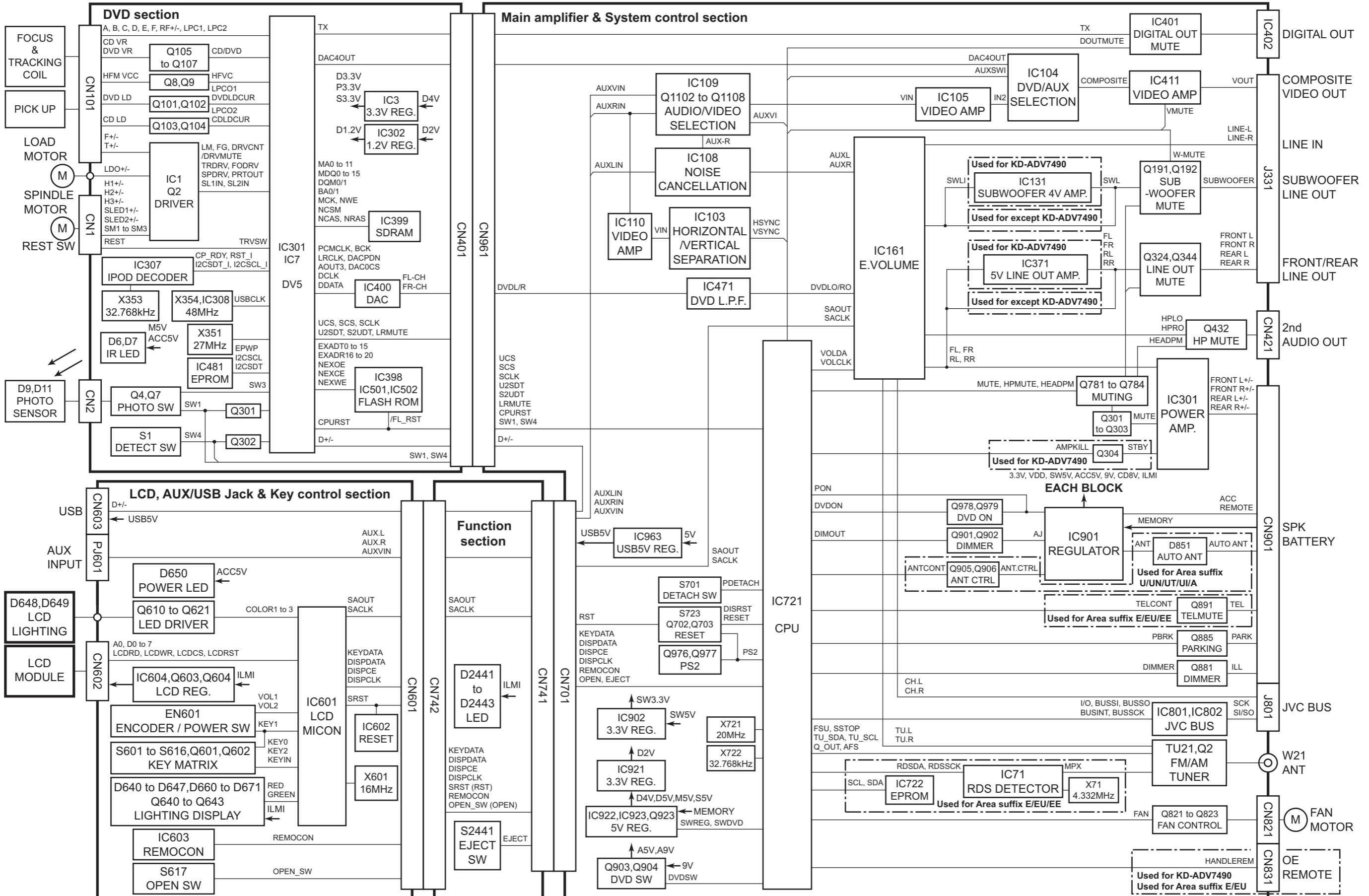


**CAUTION** Burrs formed during molding may be left over on some parts of the chassis. Therefore, pay attention to such burrs in the case of performing repair of this system.



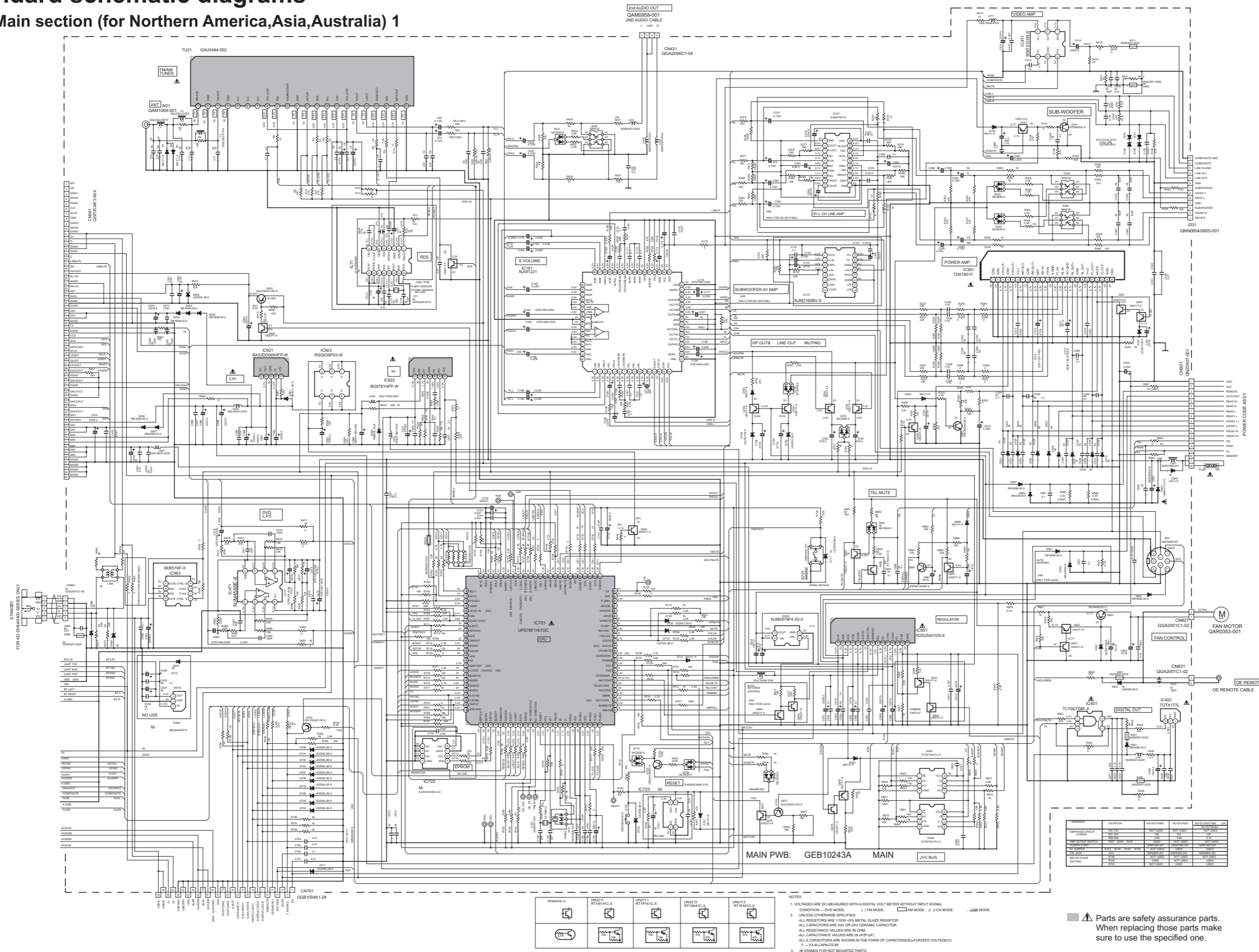
**CAUTION** Please use enough caution not to see the beam directly or touch it in case of an adjustment or operation check.

# Block diagram

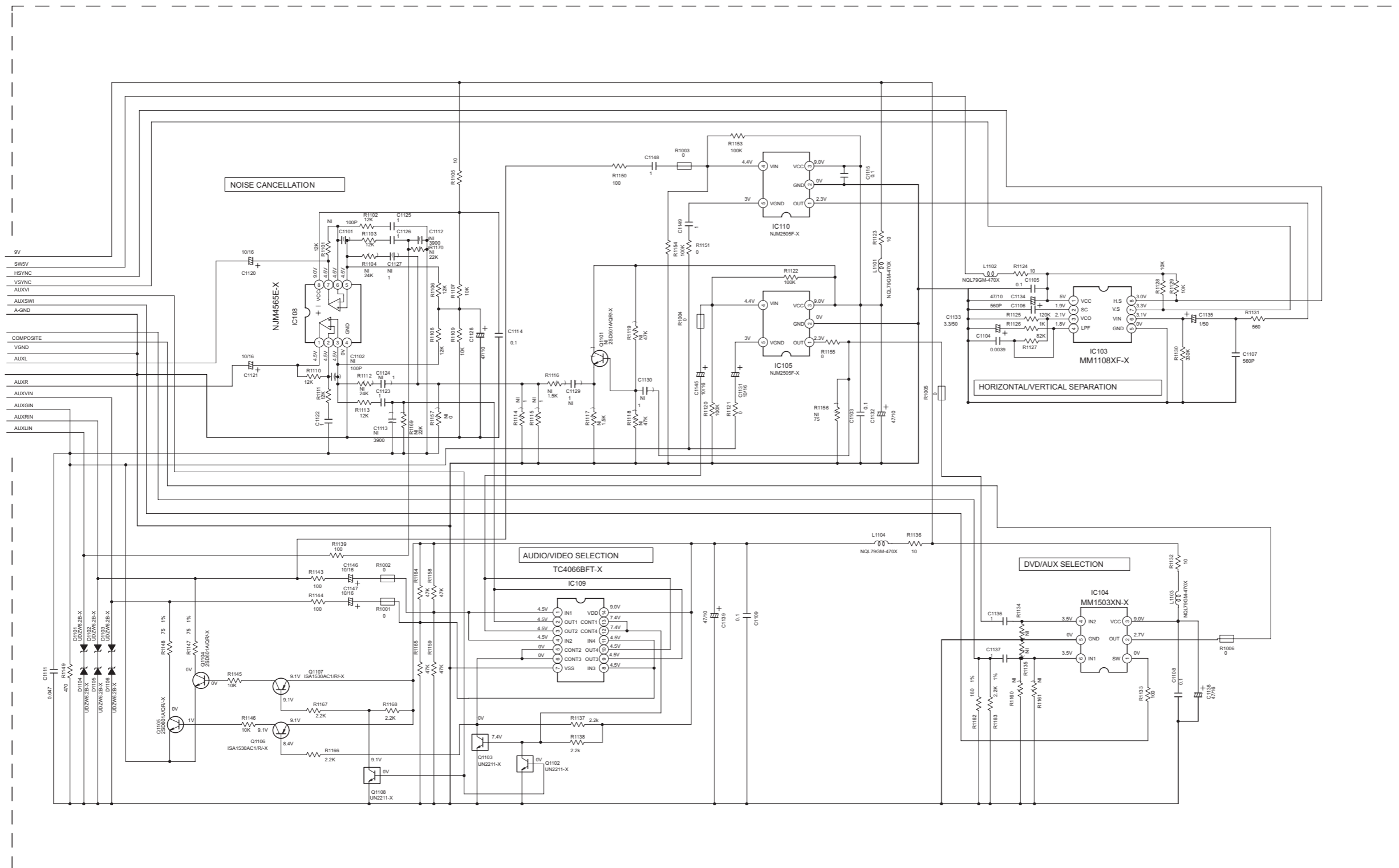


# Standard schematic diagrams

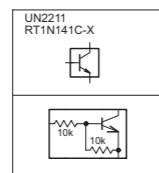
## ■ Main section (for Northern America, Asia, Australia) 1



■ Main section (for Northern America,Asia,Australia) 2



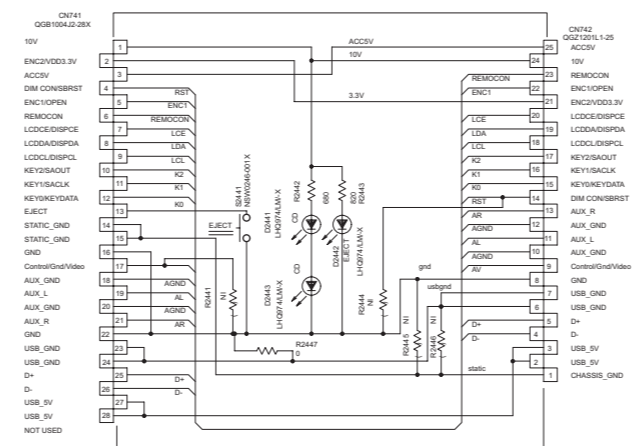
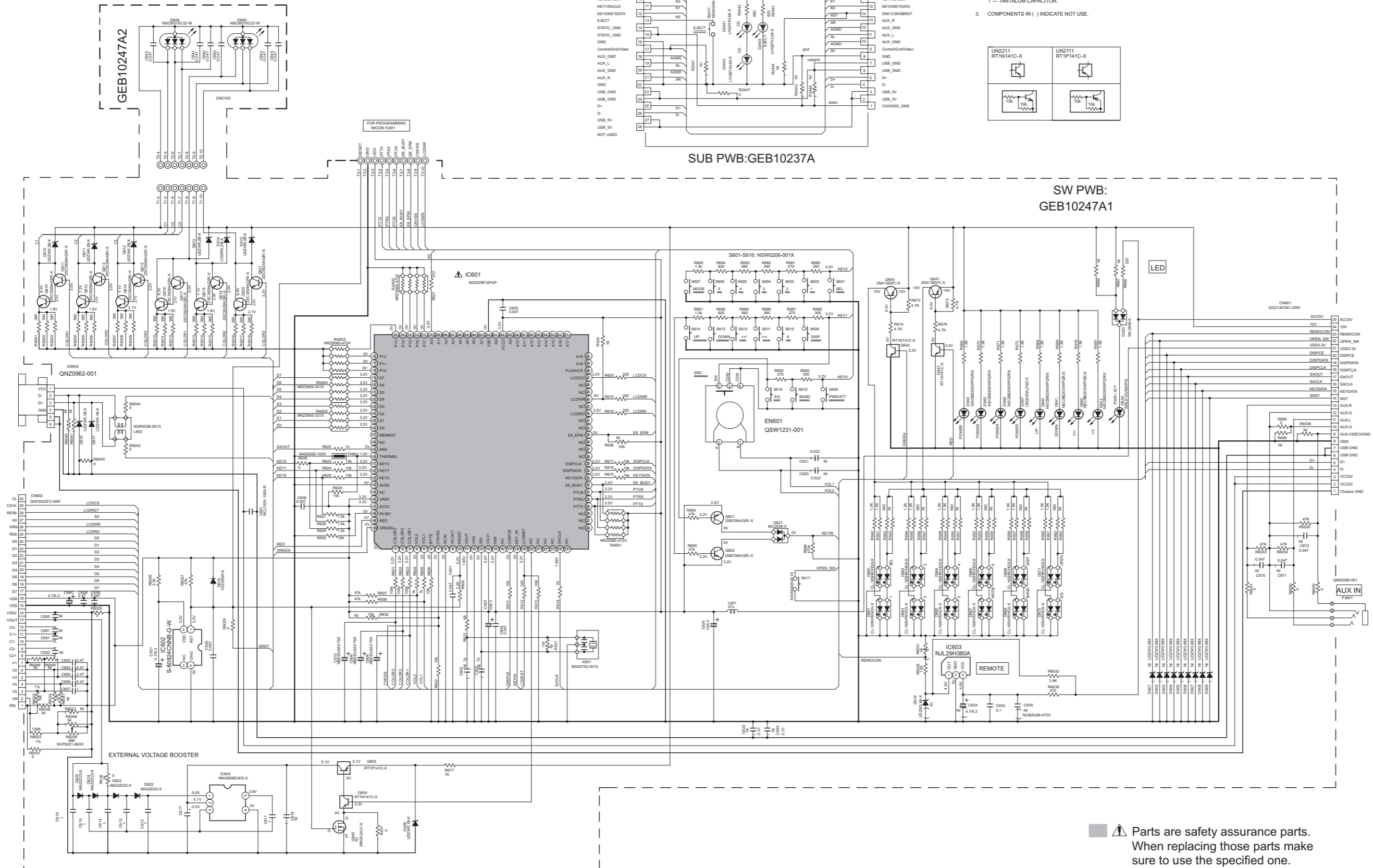
MAIN PWB: GEB10243A MAIN



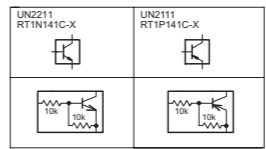
NOTES

1. VOLTAGES ARE DC-MEASURED WITH A DIGITAL VOLT METER WITHOUT INPUT SIGNAL
2. UNLESS OTHERWISE SPECIFIED, ALL RESISTORS ARE 1/16W +5% METAL GLAZE RESISTORS. ALL CAPACITORS ARE 50V OR 25V CERAMIC CAPACITOR. ALL RESISTANCE VALUES ARE IN OHM. ALL CAPACITANCE VALUES ARE IN uF(P=pF) ALL E-CAPACITORS ARE SHOWN IN THE FORM OF CAPACITANCE(uF)/RATED VOLTAGE(V) F --- FILM CAPACITOR
3. NI STANDS FOR NOT MOUNTED PARTS

■ LCD & Key control section (for Northern America,Asia,Australia)



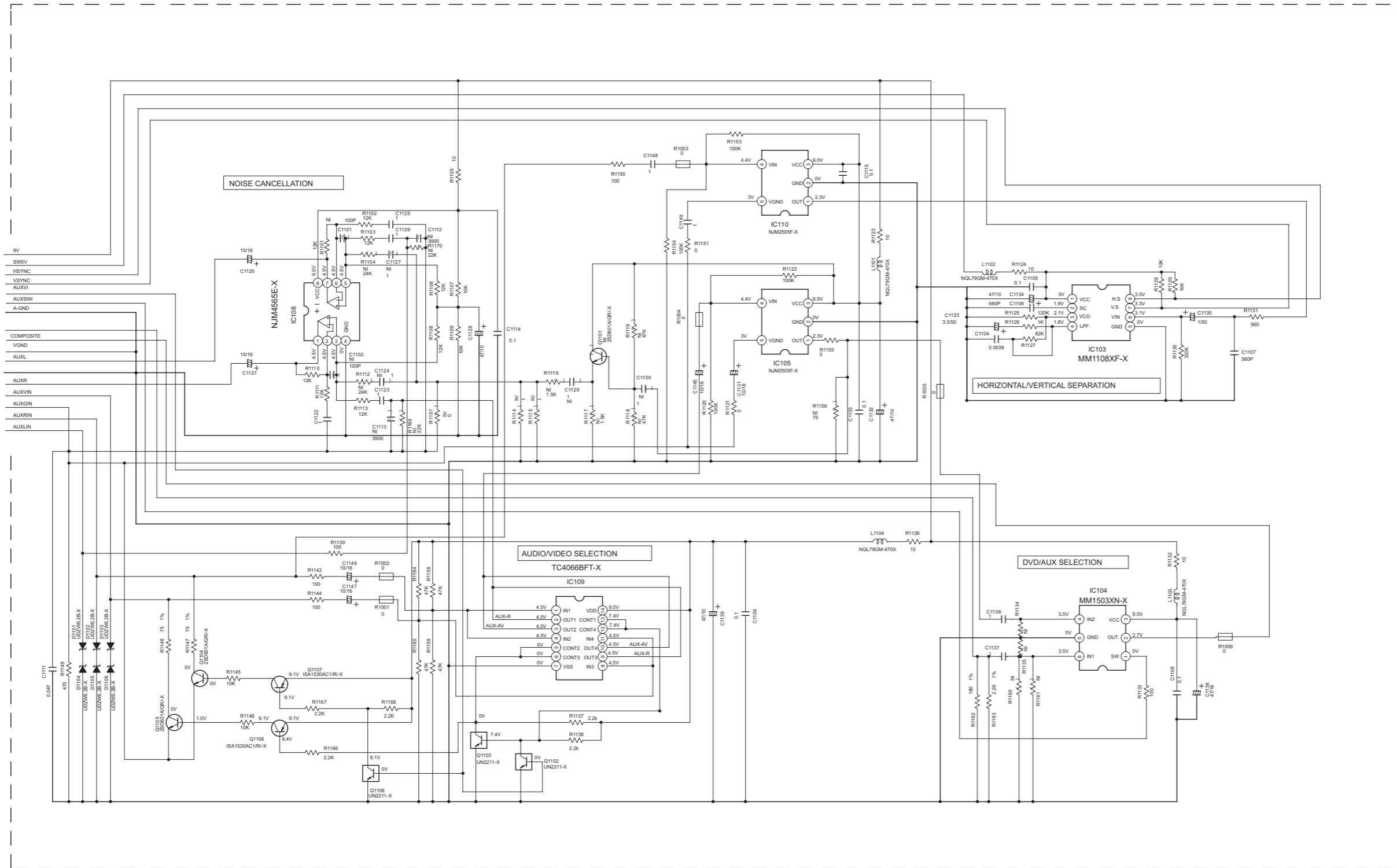
- NOTES**
- VOLTAGES ARE DC-MEASURED WITH A DIGITAL VOLT METER WITHOUT INPUT SIGNAL.
  - UNLESS OTHERWISE SPECIFIED, ALL RESISTORS ARE 1/16W METAL GLAZE RESISTORS. ALL CAPACITORS ARE 50V OR 25V CERAMIC CAPACITOR. ALL RESISTANCE VALUES ARE IN OHM. ALL CAPACITANCE VALUES ARE IN uF(P=PF) ALL E-CAPACITORS ARE SHOWN IN THE FORM OF CAPACITANCE(UF/RATED VOLTAGE(V) T-- TANTALUM CAPACITOR.
  - COMPONENTS IN ( ) INDICATE NOT USE.



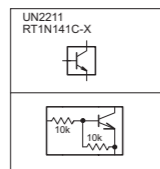
■ ⚠ Parts are safety assurance parts. When replacing those parts make sure to use the specified one.



■ Main section (for Europe) 2



MAIN PWB: GEB10243A MAIN

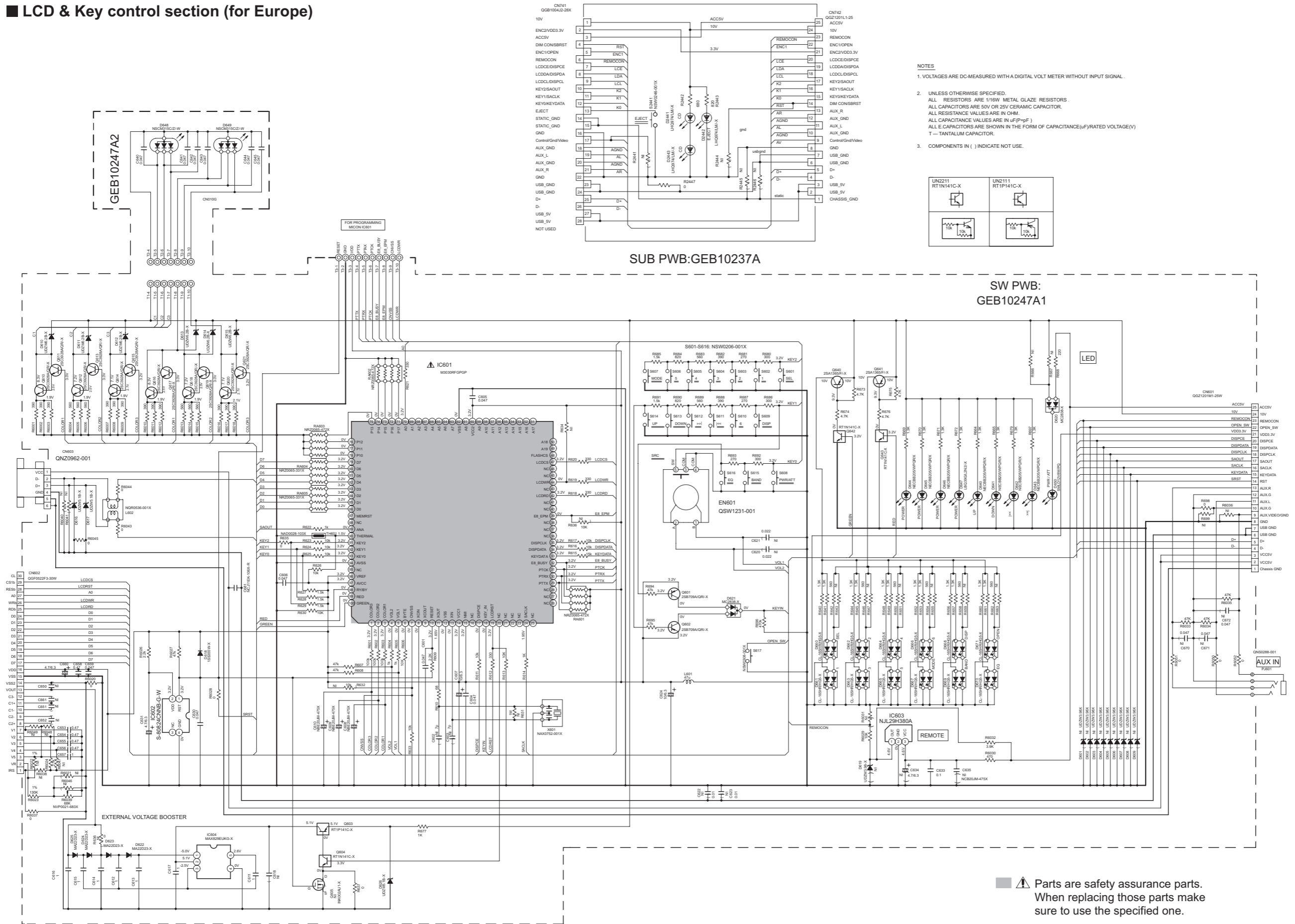


NOTES

1. VOLTAGES ARE DC-MEASURED WITH A DIGITAL VOLT METER WITHOUT INPUT SIGNAL
2. UNLESS OTHERWISE SPECIFIED.  
ALL RESISTORS ARE 1/16W +5% METAL GLAZE RESISTORS  
ALL CAPACITORS ARE 50V OR 25V CERAMIC CAPACITOR.  
ALL RESISTANCE VALUES ARE IN OHM.  
ALL CAPACITANCE VALUES ARE IN uF(P=pF)  
ALL E CAPACITORS ARE SHOWN IN THE FORM OF CAPACITANCE(uF)/RATED VOLTAGE(V)  
F --- FILM CAPACITOR
3. NI STANDS FOR NOT MOUNTED PARTS

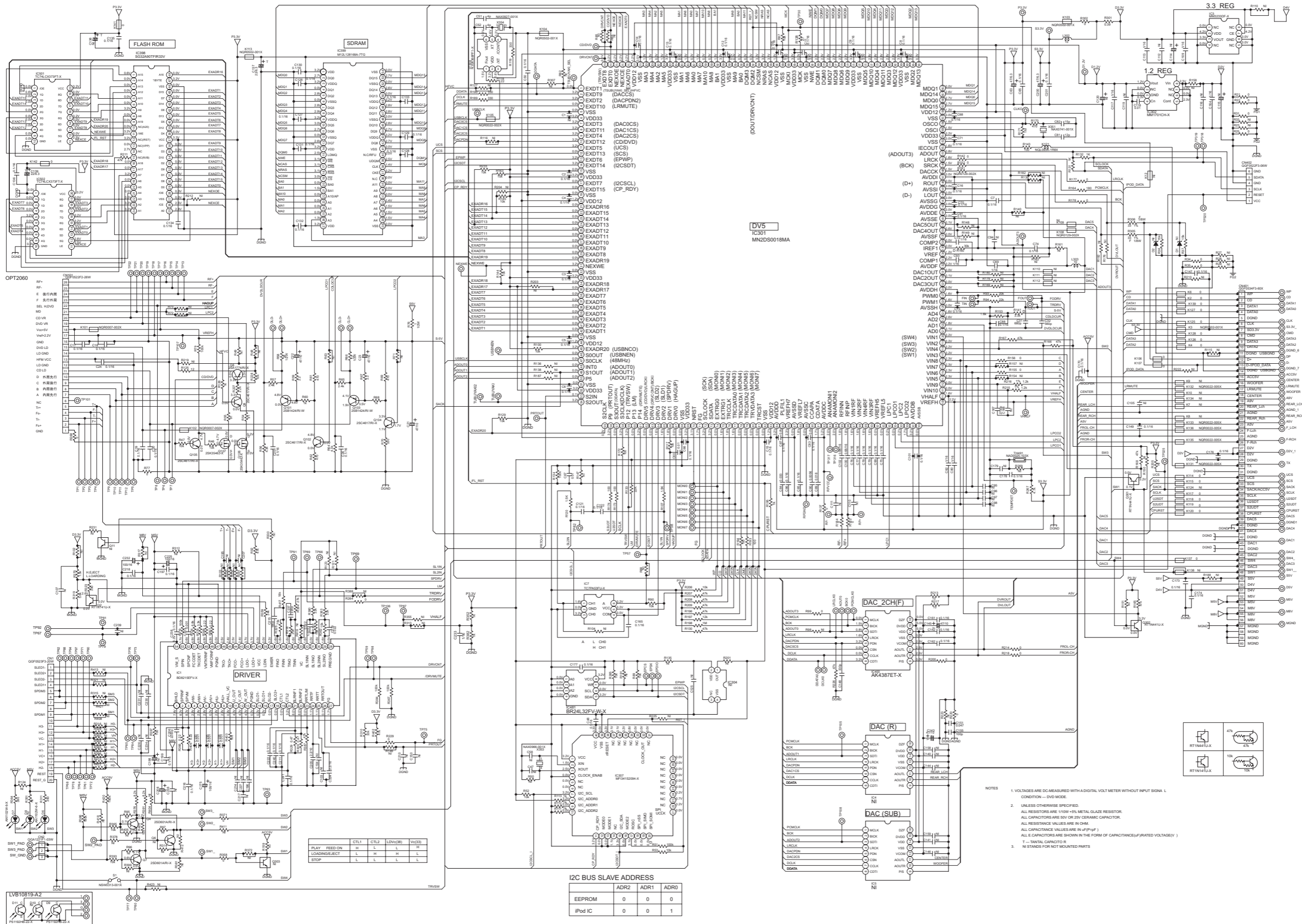


# LCD & Key control section (for Europe)



Parts are safety assurance parts. When replacing those parts make sure to use the specified one.

■ Front end section (common use)

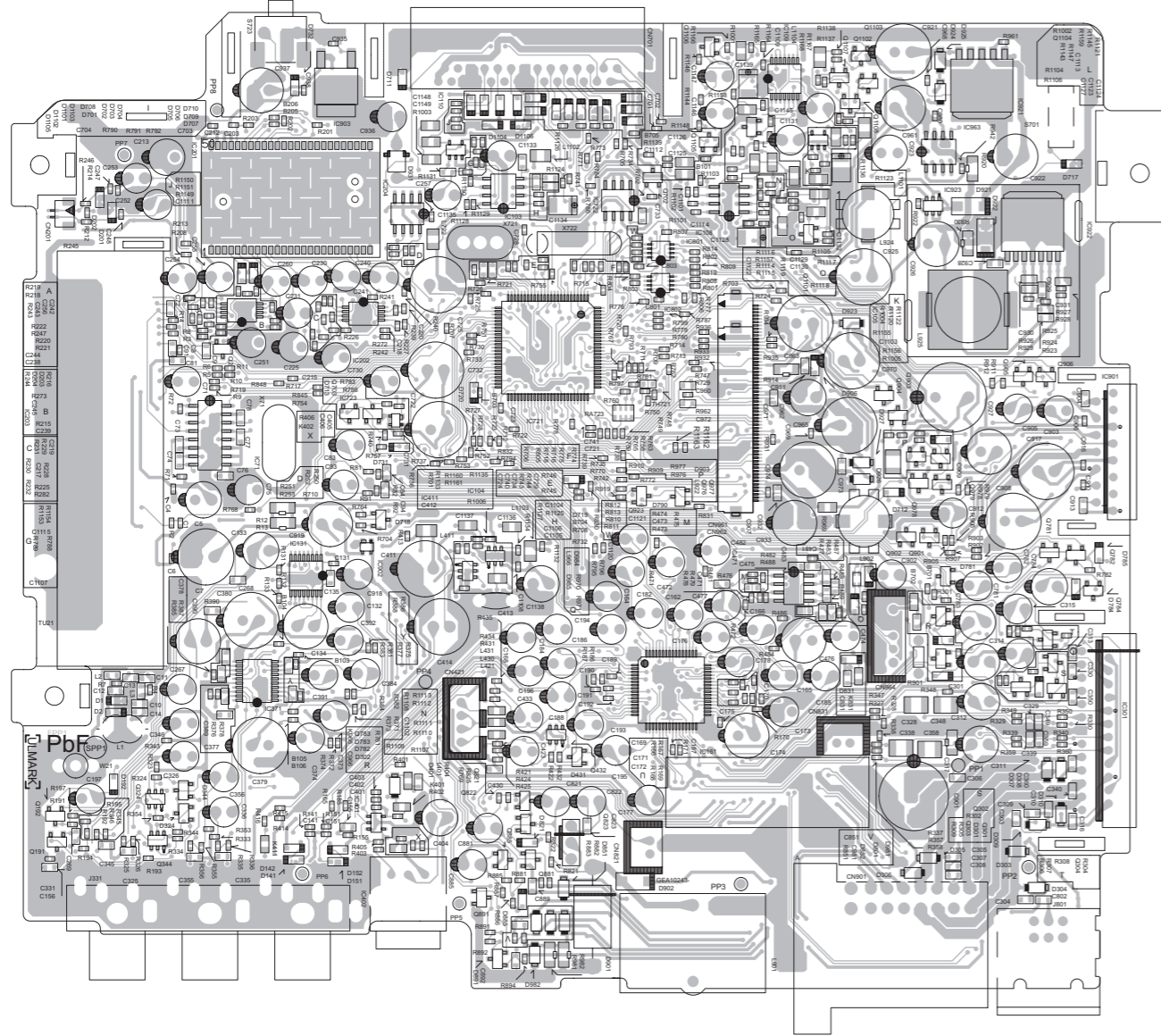


# Printed circuit boards

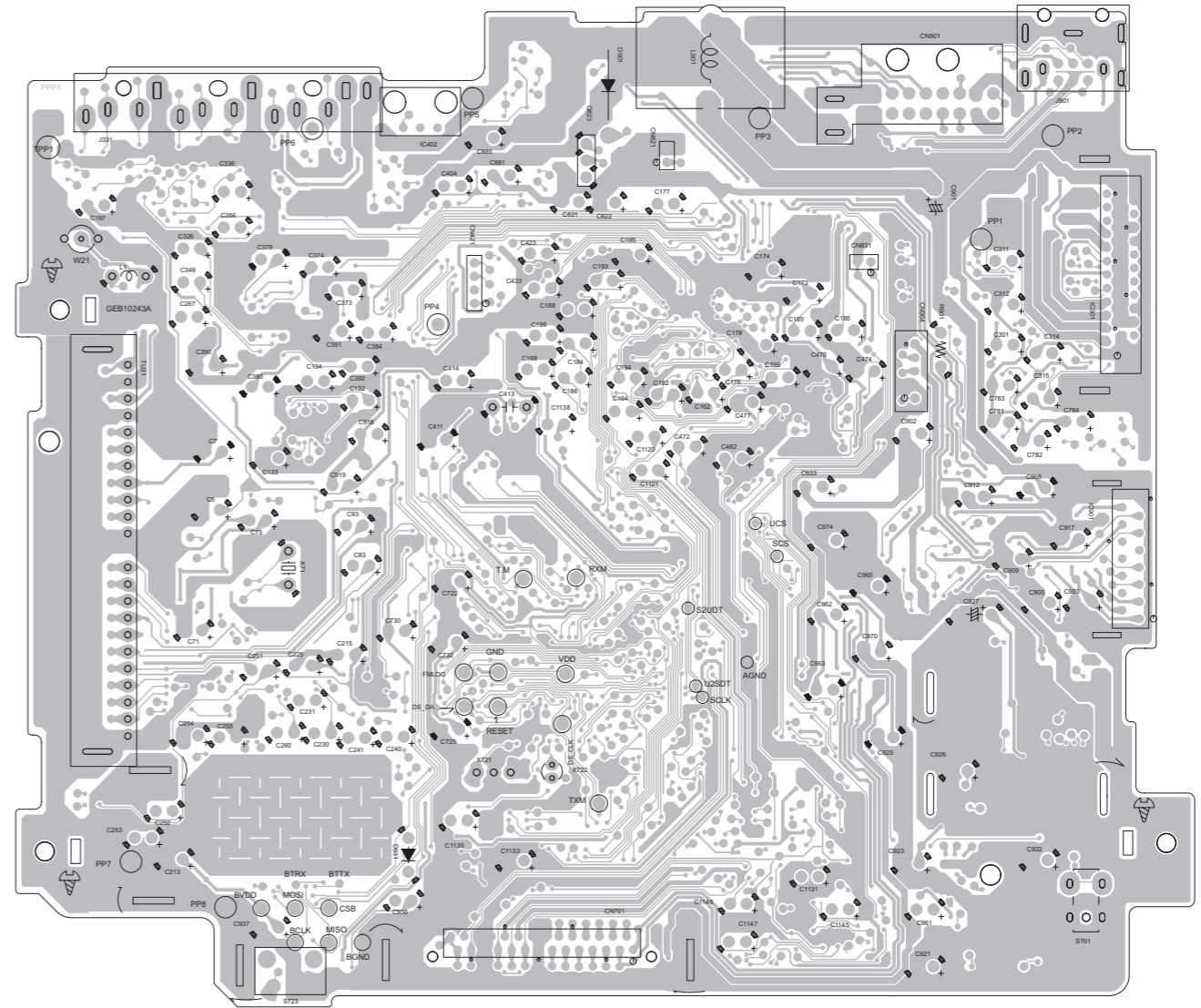
■ **Main board** Lead free solder used in the board (material : Sn-Ag-Cu, melting point : 219 Centigrade)

Lead free solder used in the board (material : Sn-Cu, melting point : 230 Centigrade)

forward side



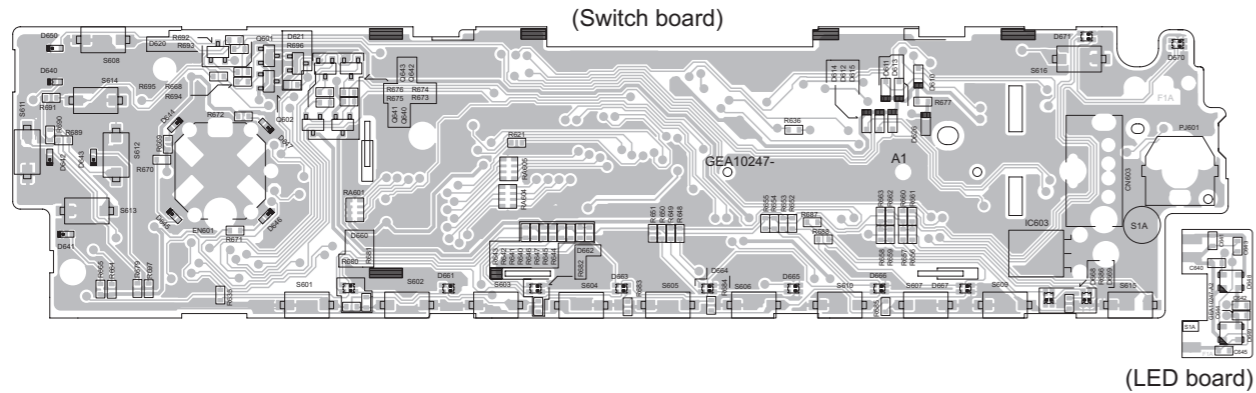
reverse side



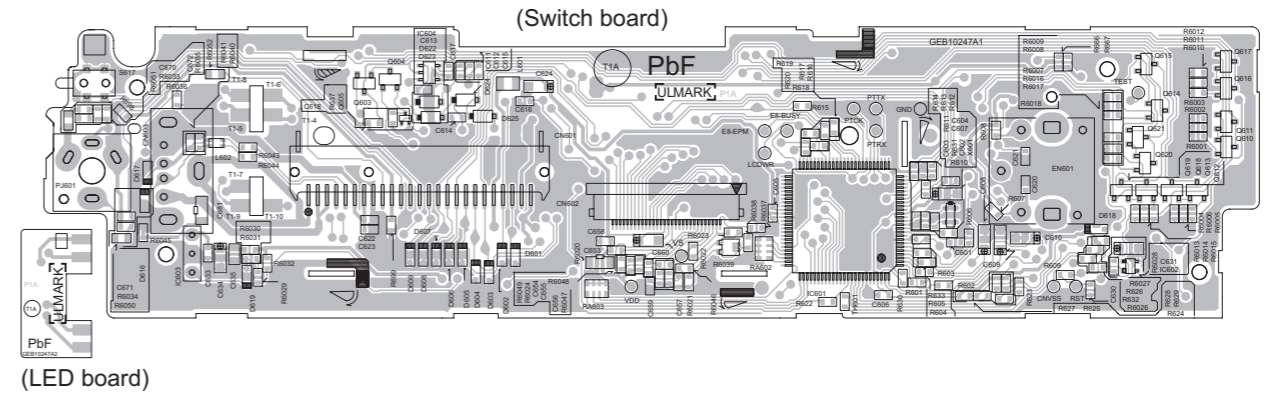
■ **Switch board** Lead free solder used in the board (material : Sn-Ag-Cu, melting point : 219 Centigrade)

Lead free solder used in the board (material : Sn-Cu, melting point : 230 Centigrade)

forward side



reverse side

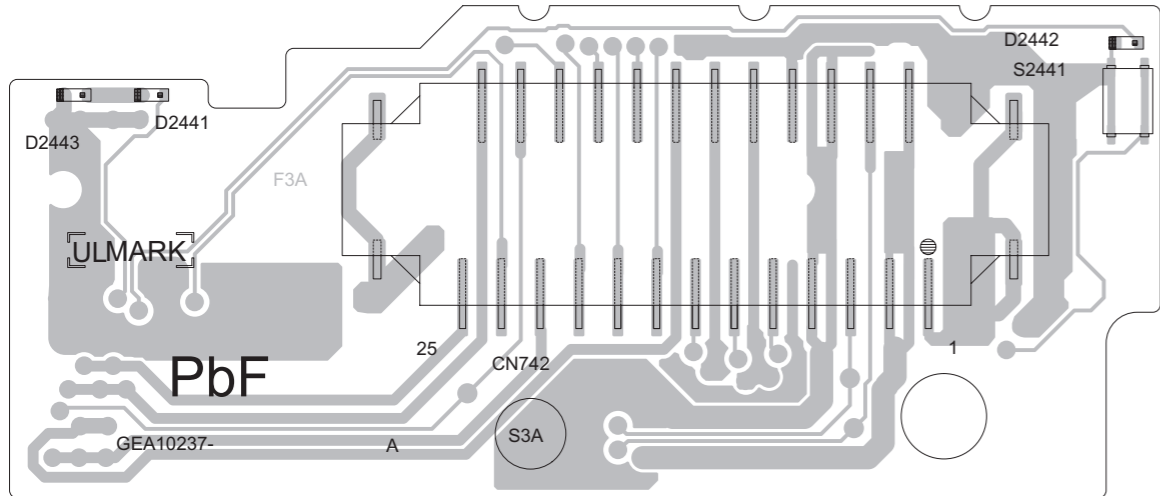


**Function board**

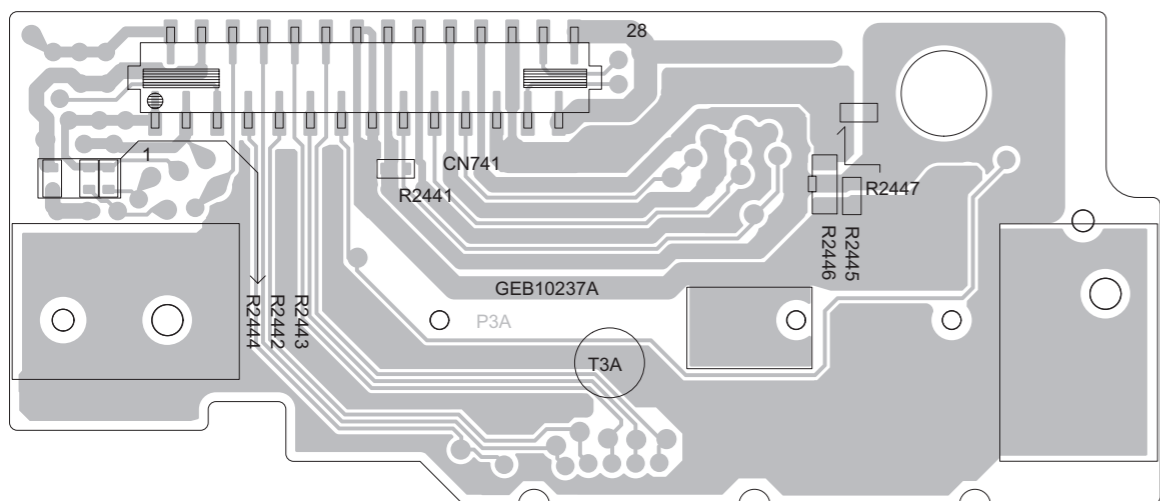
Lead free solder used in the board (material : Sn-Ag-Cu, melting point : 219 Centigrade)

Lead free solder used in the board (material : Sn-Cu, melting point : 230 Centigrade)

forward side



reverse side

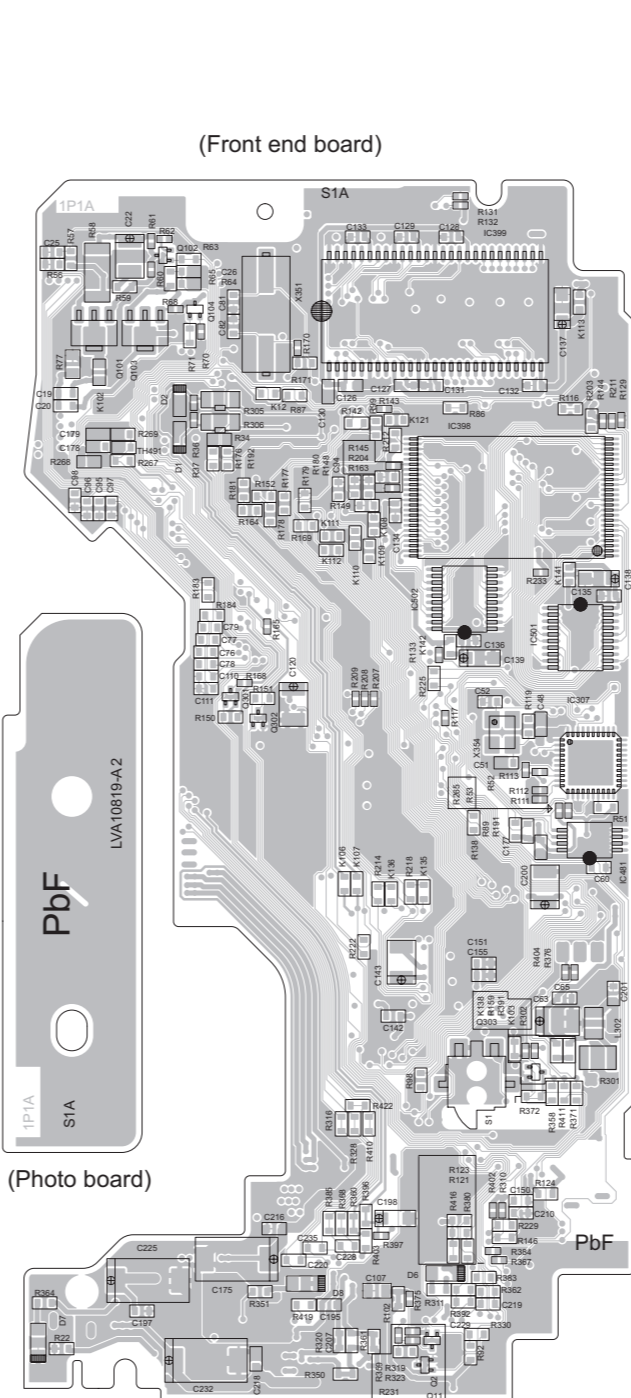


**Front end board**

Lead free solder used in the board (material : Sn-Ag-Cu, melting point : 219 Centigrade)

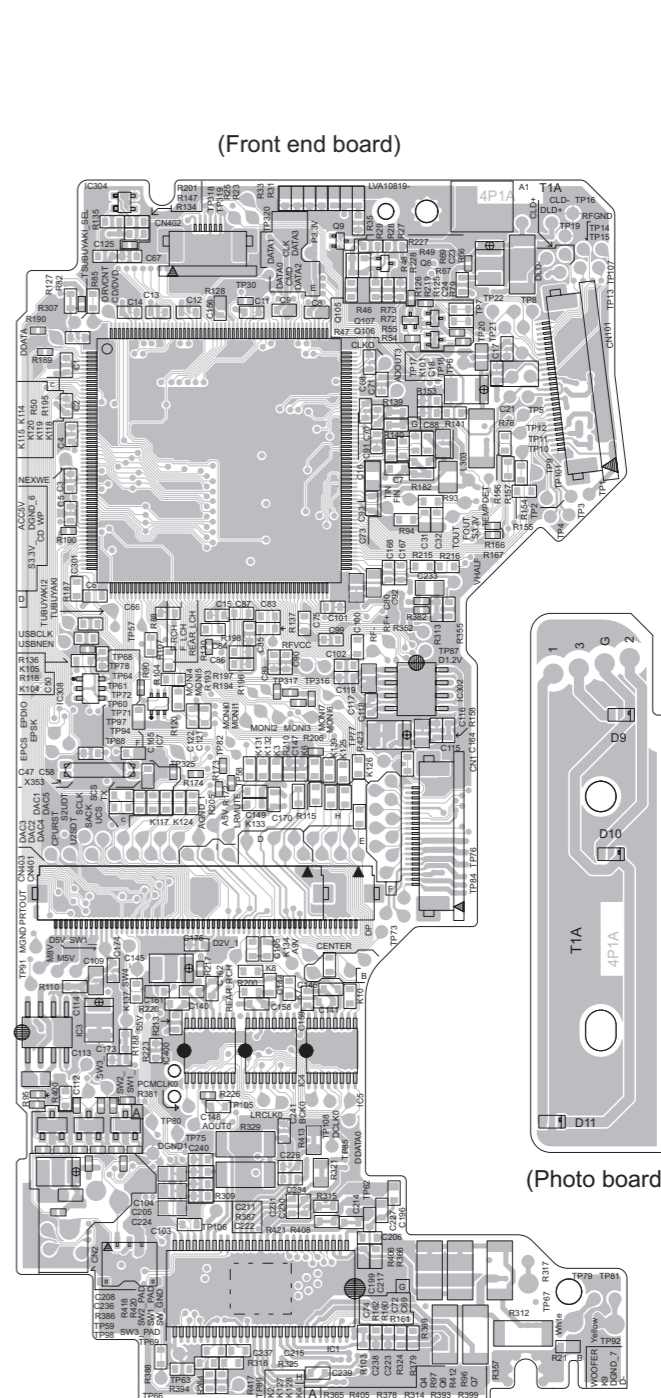
Lead free solder used in the board (material : Sn-Cu, melting point : 230 Centigrade)

forward side



(Photo board)

reverse side



(Photo board)

< MEMO >



**Victor Company of Japan, Limited**

Mobile Entertainment Business Group Mobile Entertainment Category 10-1, 1chome, Ohwatari-machi, Maebashi-city, Gumma-ken, 371-8543, Japan